



Edge 5000 and Edge AutoStore
Technology Overview

Point-Of-Work Technologies

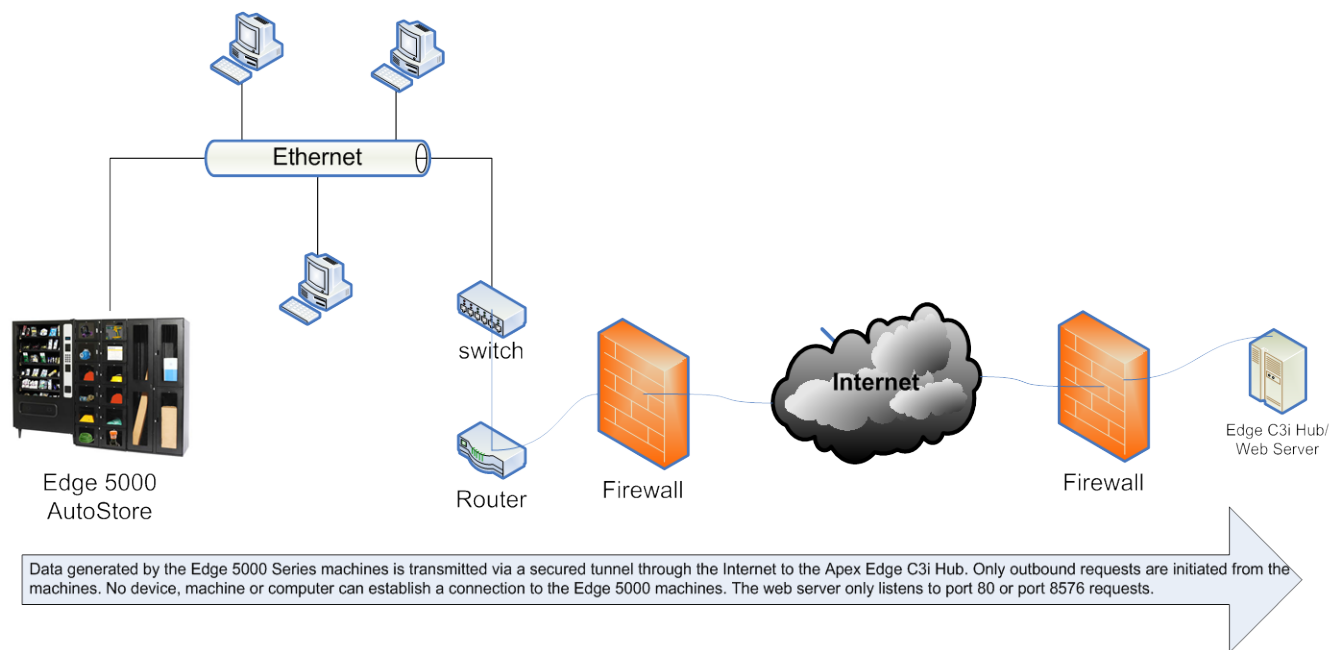


Edge 5000 and Edge AutoStore Technology Overview

1. Technologies and System Requirements for Edge 5000 Series Machines

The Edge 5000 Series machines (including Edge 5000 and Edge AutoStore) are Internet appliances developed with the best available vending technology integrated with the secure Internet technology. They only require a 110V AC power connection and an Ethernet connection. The Edge 5000 Series uses an embedded operating system on the controller board and does not need any software installation. The Edge 5000 Series can be installed inside a company local area network behind the firewall or can be installed anywhere that has a connection to the Internet. The Edge 5000 Series communicates to a remote web server, Edge C3i Hub, via port 80 or port 8576 requests. The communication from Edge 5000 Series machines to the web server is designed to be outbound only. In other words, any machine, device or computer cannot establish a connection to Edge 5000 directly. The Edge 5000 Series uses either static IP or DHCP client.

2. Typical Deployment of an Edge 5000 Series behind the Firewall



3. The Edge 5000 and Edge AutoStore Communicate with Edge C3i Hub through a Secured Tunnel

The Edge 5000 Series machines communicate with the web server over TCP/IP through a secured data tunnel. All transactions between the machine and the web server are encrypted. When an Edge 5000 Series machine is connected with the Internet, the machine will automatically register itself to the web server. The machine will not be allowed to handle transactions until it is provisioned by an authorized administrator from the website using a special tool. The web server

will establish a unique identity for each machine. All vending transactions are logged in a SQL database. Each machine will check in the web server every 30 minutes to report that it is still operating correctly. Each transaction generated by the machine is approximately 2k bits. The network traffic generated by the Edge 5000 machines is relatively small and should not interfere with the performance of a local area network.

4. Edge C3i Hub Web User Interface

Edge C3i Hub provides a web interface for all Edge 5000 Series machines. An authenticated user can access the web interface by a web browser to monitor the on-demand inventory information, machine status, usage report, and to assign access codes and other functions. The web interface does not need any client software installation and all transactions are managed under a secure and authenticated website and all functions can be accessed by any web browser anywhere and anytime.